

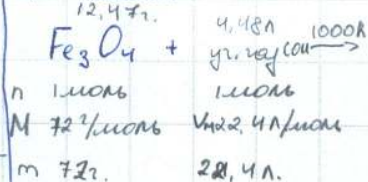
Задача №2.

Қаю:

$$m(\text{Fe}_3\text{O}_4) = 12,472.$$

$$V(\text{y.r.ay}) = 4,48\text{ л.}$$

Решение:



$$100\% \cdot \frac{m(\text{X})_{\text{реак.}}}{m(\text{X})_{\text{исх.}}}$$

~~Задача №3.~~ Задача №1.



Задача №4.



$$\omega(\text{Me}) = 43,65\%$$

Задача №3.



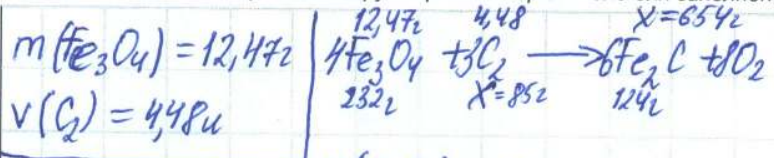
$$p\text{H} = 5 \times 10^{-6} \text{ M}$$



$$K_b, [\text{NH}_3] \cdot pK_a = 4,76.$$

Парақтың артқы жағын толтырмаңыз / Обратную сторону листа не заполнять

Қатысушының шешімдерін толтыруға арналған өріс / Поле для заполнения решений участника Парақ / Страница № 1



2-тапсырма

$$M(\text{Fe}_3\text{O}_4) = 56 \cdot 3 + 16 \cdot 4 = 168 + 64 = 232$$

$$M(\text{Fe}_2\text{C}) = 56 \cdot 2 + 12 = 112 + 12 = 124$$

$$\frac{12,47}{232} = \frac{X}{124} \Rightarrow X = \frac{12,47 \cdot 124}{232} \approx 6542$$

$$\frac{654}{124} = \frac{4,48}{X} \Rightarrow X = \frac{124 \cdot 4,48}{654} \approx 852$$

$$\frac{6542}{12,472} \cdot 100\% = 50\%$$

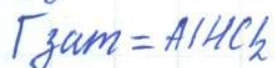
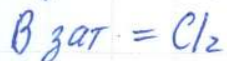
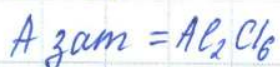
$$X(\text{Me}) = 43,65\%$$

$$A(\text{зам}) = 15,62$$

$$X(\text{Me})(\rho\text{-цисе}) = 4,42$$

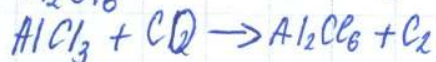
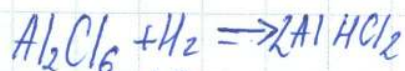
$$\omega = ?$$

$$A, B, B, \Gamma(\text{зам}) = ?$$



$$\frac{M(X)}{M(\text{Cl}_2)} \cdot 100\% = 43,65\%$$

$$\omega = \frac{4,4}{15,6} \cdot 100\% = 28,21\%$$



4-тапсырма